

Where energies make tomorrow ●

**Canopy**<sup>™</sup>  
by **T.EN**

Powered by  
**Shell CANSOLV**<sup>®</sup>

Capture with confidence. Now.

Modularized CCUS solutions accelerating your transition to a low-carbon future.



**TECHNIP  
ENERGIES**



# Capture.Now™

Transforming carbon into opportunities

Driving the CCUS market and carbon transformation. Now.

As a world-leading engineering and technology provider for the energy transition, we have over half a century of experience in energy, gas processing, CO<sub>2</sub> management and significant infrastructure developments.

Today, the global community is facing an acceleration of decarbonization with a worldwide 7Gtpa target to be reached by 2050. The era of carbon capture, utilization and storage (CCUS) is here with a tougher climate, higher stakeholder expectations and new investment incentives.

At Technip Energies, we believe in building a low-carbon future. Now we are paving the way in CCUS with our fully integrated approach. Capture.Now™, our

strategic platform for carbon capture, utilization and storage, brings our complete suite of CCUS technologies, services and solutions together under a unified umbrella.

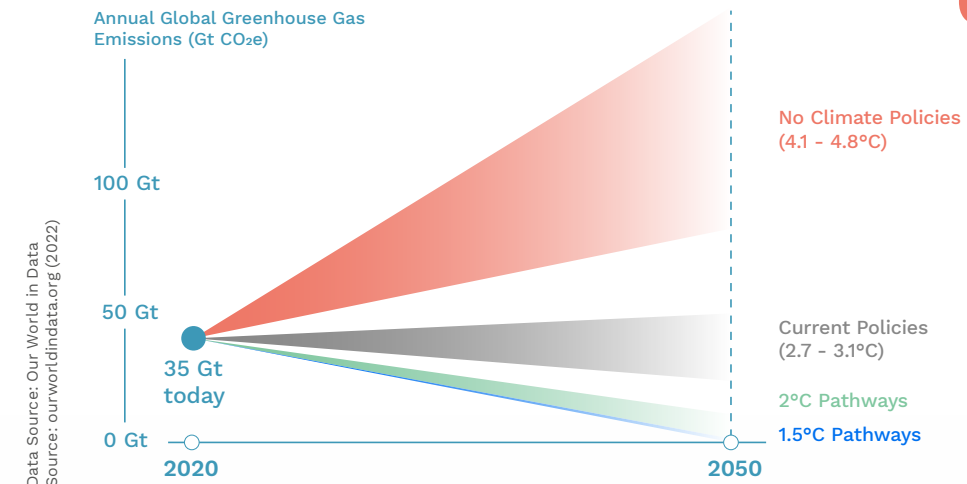
Via Capture.Now™, we support our clients throughout their CCUS journey, helping them navigate each stage to cost-effectively capture the opportunity to decarbonize their operations, exploit markets for cleaner energy and achieve net-zero goals. We are getting it done, delivering world-class, high-performance projects for the energy transition across the globe and along the value chain for various clients.



**Since 2012, Technip Energies and Shell Catalysts & Technologies have partnered to drive the energy transition. Together, our alliance combines the cutting-edge CANSOLV CO<sub>2</sub> Capture System with project management excellence, integration and delivery expertise to deliver low carbon solutions for every emitter.**

## CO<sub>2</sub> emissions and climate change

Without intervention, global CO<sub>2</sub> emissions will continue to rise.

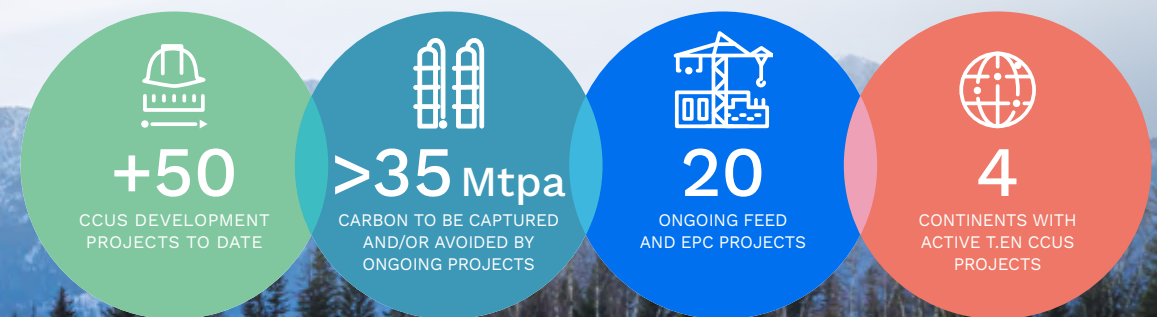


“Reaching net-zero will be virtually impossible without CCUS.”

Fatih Birol, IEA, 2021

To drastically reduce CO<sub>2</sub> emissions, the world needs significant changes, now. CCUS is one of the solutions that must be implemented.

## Technip Energies CCUS insights







Powered by  
Shell CANSOLV®

### Capture with confidence

Part of Capture.Now™, Canopy by T.EN™ is a flexible, integrated suite of post-combustion carbon capture solutions for any type of emitter.

Powered by the Shell CANSOLV® CO<sub>2</sub> Capture System, our solutions derisk your projects, freeing you to capture with confidence and meet your emissions reduction targets quickly, efficiently and affordably regardless of scale, industry or location.

As your reliable and committed partner, we guide you on your journey toward decarbonized energy and cleaner products by securing funding, optimizing your capital and operational investment and realizing the value of your carbon capture development.

At pace. At scale. Now.

**Capture performance**

> 95% recovery rate to feature energy efficiency and minimal emissions

**Capture capacity**

Range of carbon capture solutions to meet your capacity

**Capture support**

With you at every step of your carbon capture journey

### The Canopy by T.EN™ range

From testing and piloting up to the world's largest installations, we've got your post carbon capture solutions covered.

 <b>PILOT</b> 1.5 ktpa	 <b>C10</b> 10 ktpa	 <b>C100</b> 100 ktpa	 <b>C200</b> 200 ktpa	 <b>C+</b> Bespoke sizing & design	 <b>MARINE</b> Offshore
Test anywhere, anytime	Standardized solutions for smaller emitters		Any scale for any facility		Specialized solutions

# Accelerating your decarbonization journey

## NET ZERO TEESIDE



- **Contract:** FEED
- **Award:** December 2011
- **Delivery:** Q1 2023
- **Final Client:** BP (leading consortium - BP, Equinor)
- **Location:** Teesside, UK
- **Capacity:** 2,000,000 tpy CO<sub>2</sub> captured

Technip Energies is leading the T.EN / GE consortium in charge of executing a FEED competition with submission of an EPC proposal for a new 860 MW power plant integrated with a 2 Mtpa carbon capture unit and a 4 Mtpa high-pressure compression facility. CO<sub>2</sub> capture technology is Shell CANSOLV®.

## VESTFORBRAENDING WTE CO<sub>2</sub> CAPTURE



- **Contract:** FEED + EPC
- **Award:** April 2023
- **FEED Delivery:** September 2023
- **Client:** VF Carbon Capture A/S (SPV) for I/S Vestforbrænding
- **Location:** Glostrup, Denmark
- **Capacity:** 450 kta CO<sub>2</sub> captured

Carbon capture from flue gas at existing waste incineration plant, dehydration and compression of CO<sub>2</sub>, utilization of surplus heat for district heating. CO<sub>2</sub> is stored underground 60 km away from Glostrup plant (out of T.EN scope).

## SHELL DEER PARK PROJECT



- **Contract:** FEED services
- **Award:** 2022
- **Delivery:** 2022
- **Final Client:** Shell
- **Location:** Texas, USA

FEED design and TIC estimate support for new carbon capture facility. T.EN scope includes quench, absorption, solvent regeneration, CO<sub>2</sub> compression and dehydration units.

## SHELL - TECK CARBON CAPTURE PILOT PLANT



- **Contract:** Pilot plant supply
- **Award:** 2022
- **Delivery:** 2023
- **Final Client:** Teck Metals Ltd.
- **Location:** Trail, Canada
- **Capacity:** 1.5 Kta of CO<sub>2</sub> captured

CC Pilot for pyrometallurgy (Lead, zinc production). Carbon capture from lead smelter. Possible liquefaction of CO<sub>2</sub>.



# Canopy C200

The only standard, configurable and modularized carbon capture solution of 200 Ktpa currently available on the market.

Canopy C200 combines leading carbon capture technology with advanced modular architecture and seamless facilities integration.

## KEY FEATURES

- >95% capture rate
- <26 months CED to delivery on site
- Transportable by truck directly to all small emitters
- 95% availability
- Modular design easily transportable
- Proven & efficient CANSOLV® CO<sub>2</sub> Capture System
- Full range of services from O&M to financing

# Maximizing value



## Capture value

Canopy C200 leverages technology and standardized production to enhance affordability, optimize CAPEX, reduce costs and seamlessly integrate with your facility for maximum economic performance.



## Capture time

Simplify project delivery, minimize operational downtime and fire up operations sooner. Canopy C200 can be delivered to your door in less than 26 months.



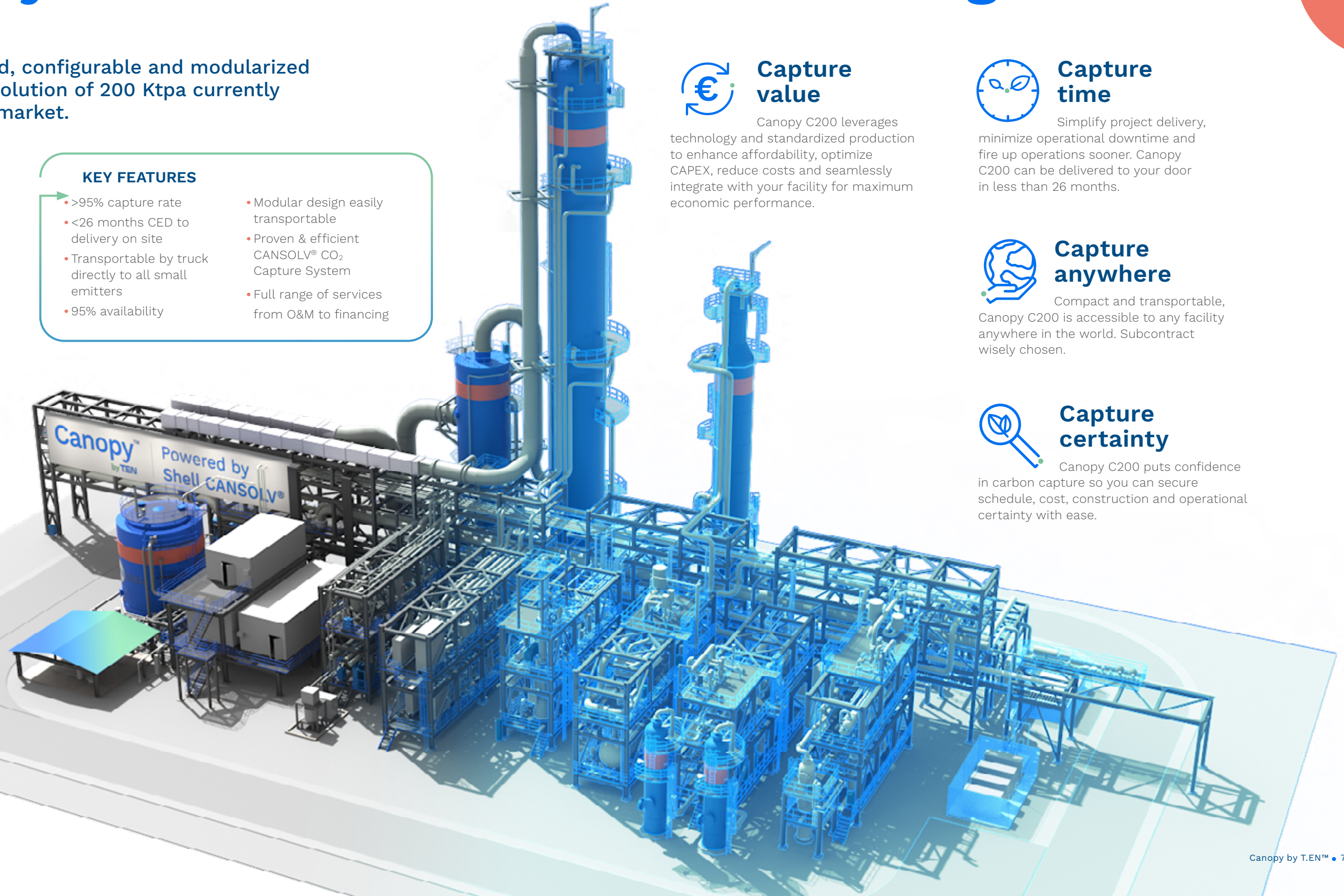
## Capture anywhere

Compact and transportable, Canopy C200 is accessible to any facility anywhere in the world. Subcontract wisely chosen.



## Capture certainty

Canopy C200 puts confidence in carbon capture so you can secure schedule, cost, construction and operational certainty with ease.





Julie Cranga  
Vice President Business Development CO<sub>2</sub> Management  
+33 6 86 87 58 39  
[julie.cranga@technipenergies.com](mailto:julie.cranga@technipenergies.com)

Julien Vitoux  
Head of Business Development, CO<sub>2</sub> Management  
+33 6 77 51 24 47  
[julien.vitoux@technipenergies.com](mailto:julien.vitoux@technipenergies.com)

[technipenergies.com](http://technipenergies.com)